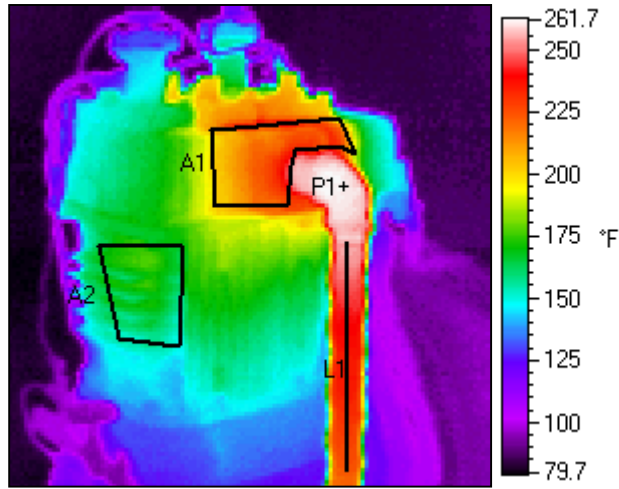


Compressor 7, Plant 3



compressor.isi

Info:

Image Path	E:\INFRARED SOLUTIONS\SNAPVIEWPRO2\SAMPLE IMAGES\compressor.isi
Image Date/Time	Wednesday, January 15, 1997 10:11:20 AM
Report Date/Time	Monday, May 10, 1999 2:49:23 PM
Temp Unit	Fahrenheit
User	Joe
Location	Plant 3
Target	Compressor 7

Data:

Label	Emissivity	Background	Average	Std Dev	Max	Min
A1	0.93	68	213.0	9.80	242.2	194.5
A2	0.88	68	166.6	6.69	178.5	150.0
L1	0.95	68	228.6	8.63	245.2	215.1
P1	0.92	68	255.1	.	.	.

Comments:

1. Abnormal temperature rise A1 to P1.
2. Need to check air inlet pre-cooler for tube sheet obstruction.
3. Take another infrared survey ASAP.
4. Pull a lube oil sample and check wear-debris counts.
5. Schedule a vibration data set collection ASAP to determine if piston slap or 1X values have increased.
6. Change route collection interval to 2X weekly for the next 60 days.